



Your Entertainment Planner

with  Alive Network

Less worry, more party! This nifty guide is full of on-the-day timings & handy checklists for your wedding entertainment, helping you sort the planning and focus on the fun stuff!



VENUE CHECKLIST *(for ultimate party conditions!)*

- Are there any sound limiters or noise restrictions?**
Heart set on a live band? Check this before you book your venue!
- Is there enough performance space?**
At least 2x2m for a soloist, 3x4m for a 4-piece band
- Is there a power supply near the performance area?**
2-3 standard household sockets
- Is there a changing space or room?**
Where artists can smarten up before the performance
- Are your bar & dancefloor located in the same room?**
So your party isn't split across two rooms
- Is there a live music curfew?**
Usually midnight, but it can be earlier or later for some venues
- Does your venue need proof of PAT & PLI for any live entertainment?**
Standard safety and insurance requirements. All Alive artists have them and can produce certificates when needed.



ARTIST CHECKLIST

12-18 Months Before:

- Check Availability**
Search available performers by your date & wedding location on AliveNetwork.com
- Check Performance & Style**
Browse performers' images, videos & audio clips
- Repertoire**
Check that the songs they play match your tastes
- Reviews**
Check out their previous performances & event galleries

Ask Your Artist:

- Can you learn a first dance or special song?
- Do you offer DJ sets in between & after live music sets?
- Do you offer additional daytime-friendly set ups for my ceremony, reception or wedding breakfast?

One Month Before:

- Artist will contact you to run through timings & finer details of your day
- Give your artist advance notice to learn any ceremony or first dance song requests



On The Day:

- Set Up Time**
45 - 90 mins
- Parking Space**
Close to the performance area
- Outside Cover**
Shelter from wind/rain/sun if performing al fresco
- Soft Drinks & Food**
Keep your artist's energy up for a crowd-wowing performance!

WEDDING CEREMONY



Music for your prelude (as guests arrive)

30 mins

Music during your ceremony. Entrance of the bride, signing of the register, and your walk down the aisle as newlyweds

3-4 songs

DRINKS RECEPTION



After the ceremony, as your guests relax and chat before your wedding breakfast.

Your entertainment should... continue the excitement after your ceremony & provide the perfect mood for mingling.

**60 mins or
2 x 45 mins**

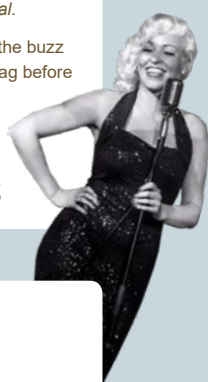
WEDDING BREAKFAST



Ambient music or ice-breaking entertainment during the meal.

Your entertainment should... keep the buzz going, so the party feeling doesn't flag before the speeches.

**60 mins or
2 x 45 mins**



EVENING RECEPTION

Entertainment for your big party finale, after evening guests arrive and the cutting of the cake.

First Dance

Your special song/s can be played live by your artist or through a laptop or iPod.

1-2 songs

1st Live Music Set

Your artist will be prepped to kick in with your first party set after the first dance.

60 mins

1st DJ Set

Your artist will take a break, but the party keeps going as your evening food is served.

45-60 mins

2nd Live Music Set

Time to push this party into another gear and get everyone on their feet again.

60 mins

2nd DJ Set

Dance the night away as diehard partygoers get their rave on.

Until close

Need more help? Give us a call on 01782 740839 or check out our [Ultimate Guide to Wedding Entertainment](#).